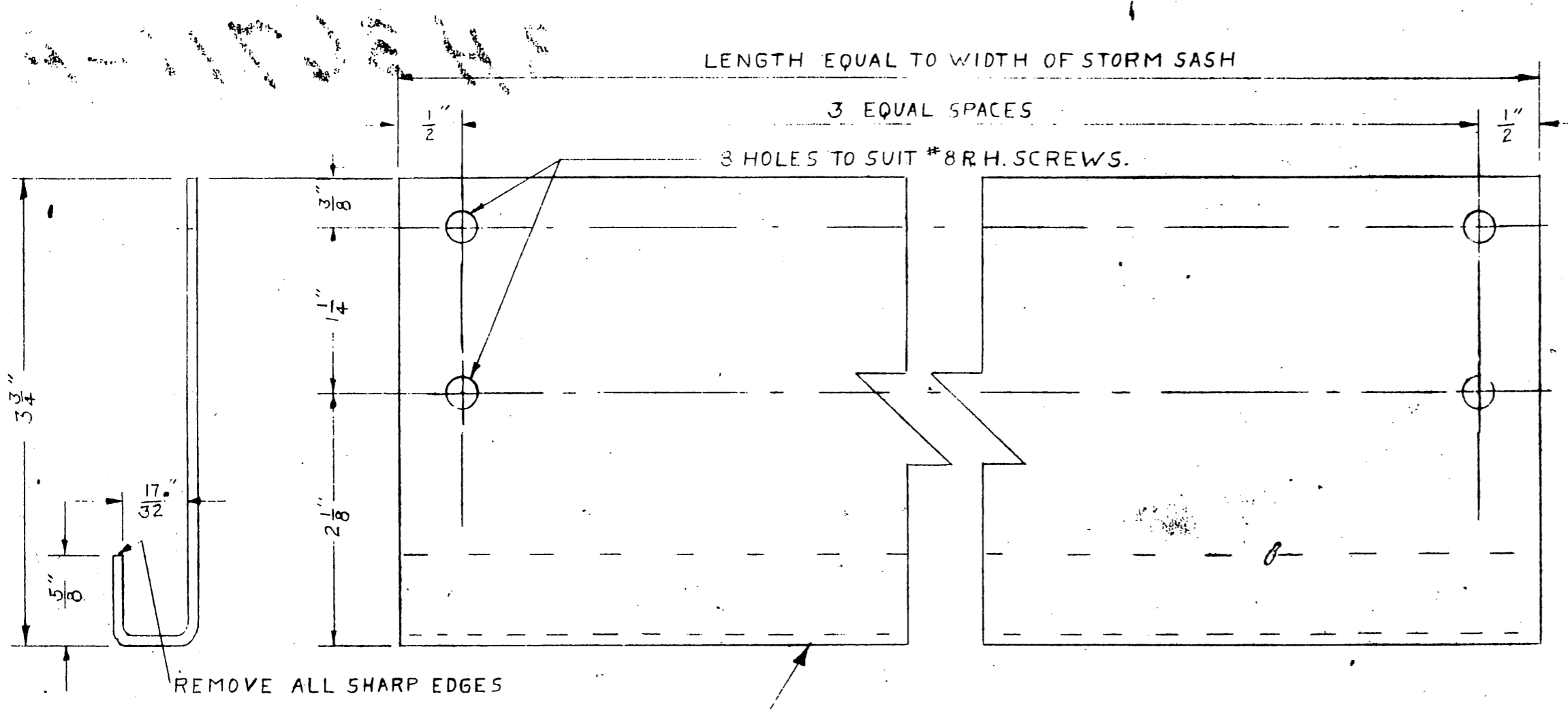
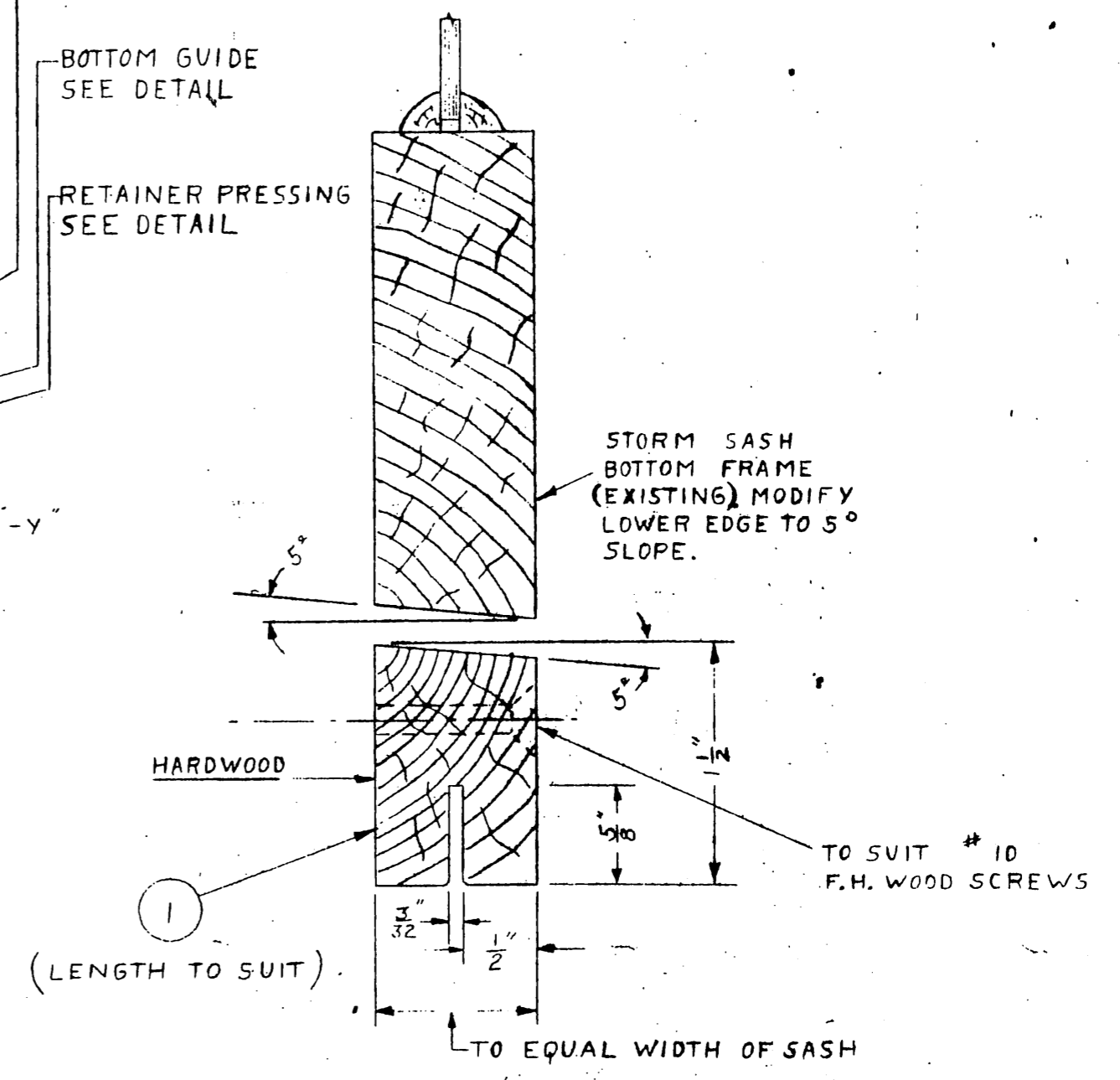
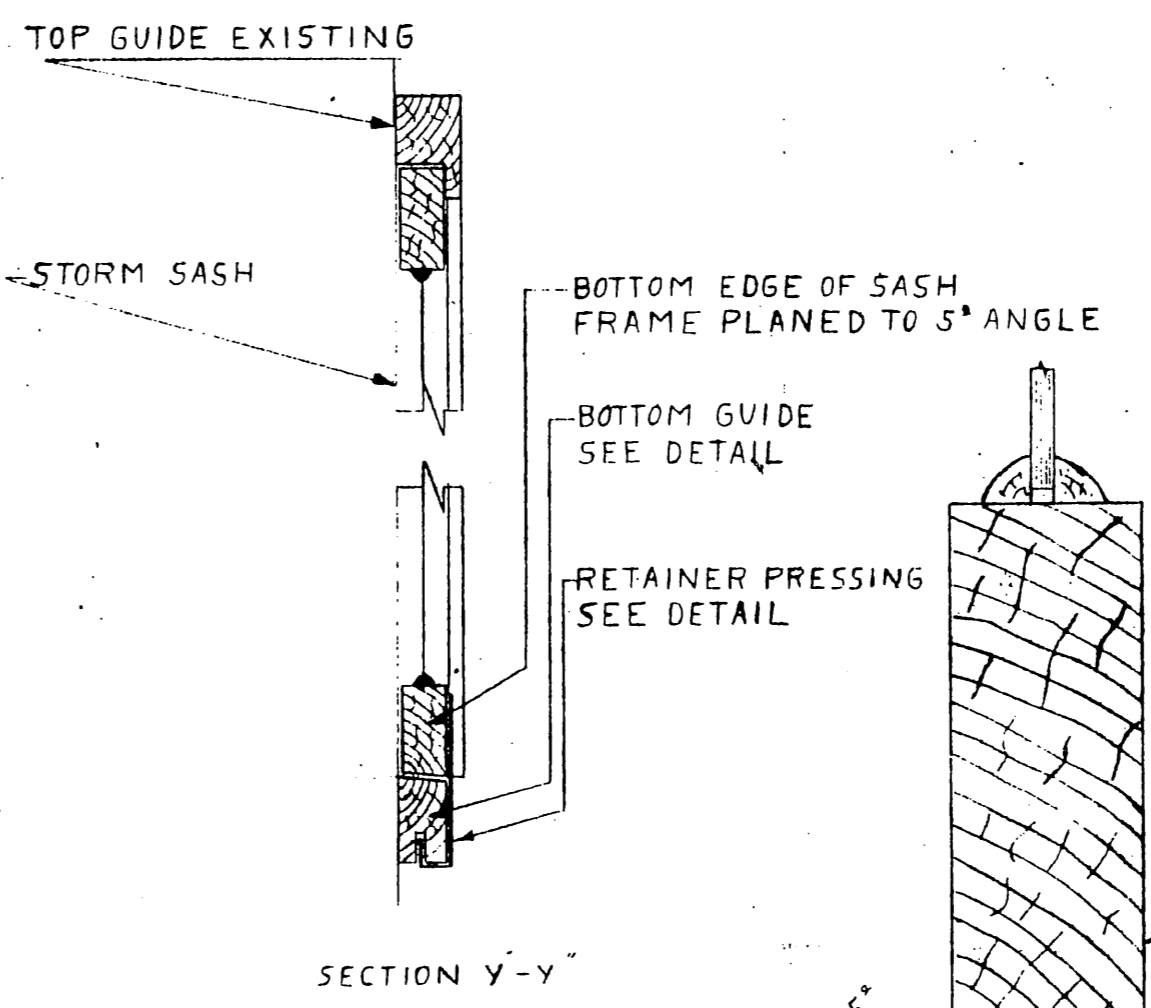
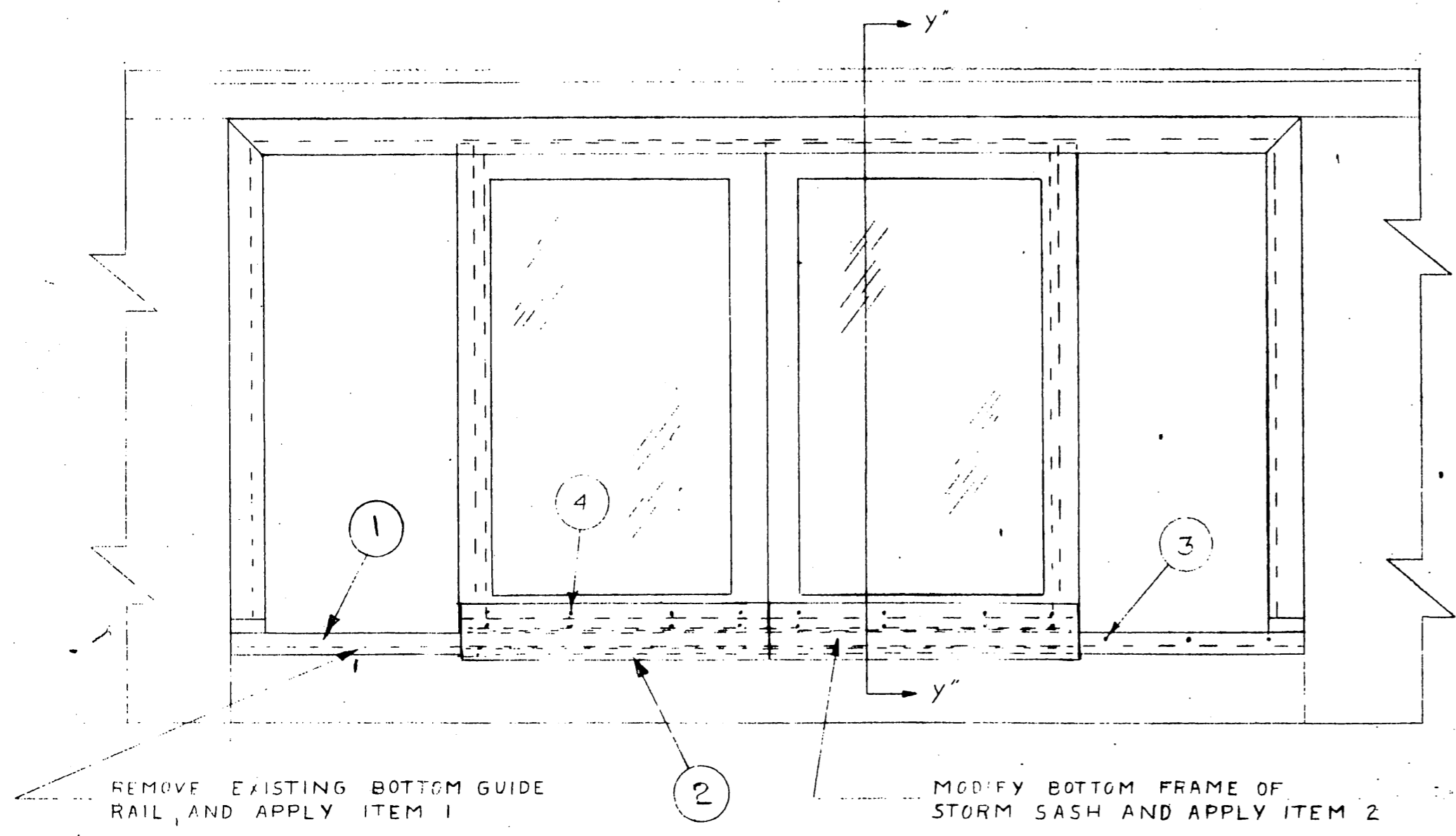


CAR CLASS	LINE
ALL WOOD CABOOSES	1



Andrew Blackburn
Collection

NO. REQD PER CAR	MATERIAL	DESCRIPTION	ITEM
32	BRASS	# 8 R.H.W.S.	4
AS REQ	STEEL	# 10 F.H.W.S.	3
4	15 GAUGE GALVANIZED	GUIDE PRESSING	2
2	HARDWOOD	BOTTOM GUIDE	1

CANADIAN NATIONAL RAILWAYS
EQUIPMENT DEPARTMENT
OFFICE OF CHIEF OF M.P. & C.E.

SUBJECT: STORM SASH-ALTERATION

USED: ON CUPOLA SIDE WINDOWS

REFERENCES:
CORRECT

APPROVED:
R. W. Bradford
CHIEF MECH'L & ELECTR'L ENGR

DRAWN BY: G.C. DATE: A
TRACED BY: G.C. APRIL 23
CHECKED BY: CW 1968

3H-3671A