

NOTE ALL RIVETS 1/8" DIA. UNLESS OTHERWISE MARKED.

BRASS STRIP 1/8" B.W.G. 1/2" WIDE 3" LONG SOLDERED TO LAMP SOCKET

SCREWED PORTION OF SOCKET TO BE CUT OFF FLUSH WITH BODY OF SOCKET

ELECTRIC BULB SOCKET & BRACKET NOT TO BE SUPPLIED UNLESS SPECIFIED

ELECTRIC LAMP SOCKET HOLDER 27 B.W.G. BRASS 1" DEEP SOLDERED TO LAMP CASING

TO SUIT HEIGHT OF CONE
FOR INSTRUCTION PLATE SEE ENLARGED VIEW

POCKET FOR GLASS 1/2" DIA. TELLTALE HOLE GLASS 1/4" SQUARE

HOLE CUT IN DOOR & LAMP BOTTOM FOR WIRE NOT TO BE SUPPLIED UNLESS SPECIFIED

LAMP CASE BOTTOM 1 REQ'D MAT'L #18 GAUGE TERNE

CIRCULAR BEAD 3/8" WIDE 1/8" DEEP
3-016 BRASS SPRINGS 1/2" WIDE SOLDERED TO FRONT BOTTOM

DOOR RETAINER SEE ENLARGED VIEW

2-1/8 BRASS SPRINGS RIVETTED & SOLDERED TO LAMP CASING TO HOLD DOOR UP WHEN OPEN SEE ENLARGED VIEW

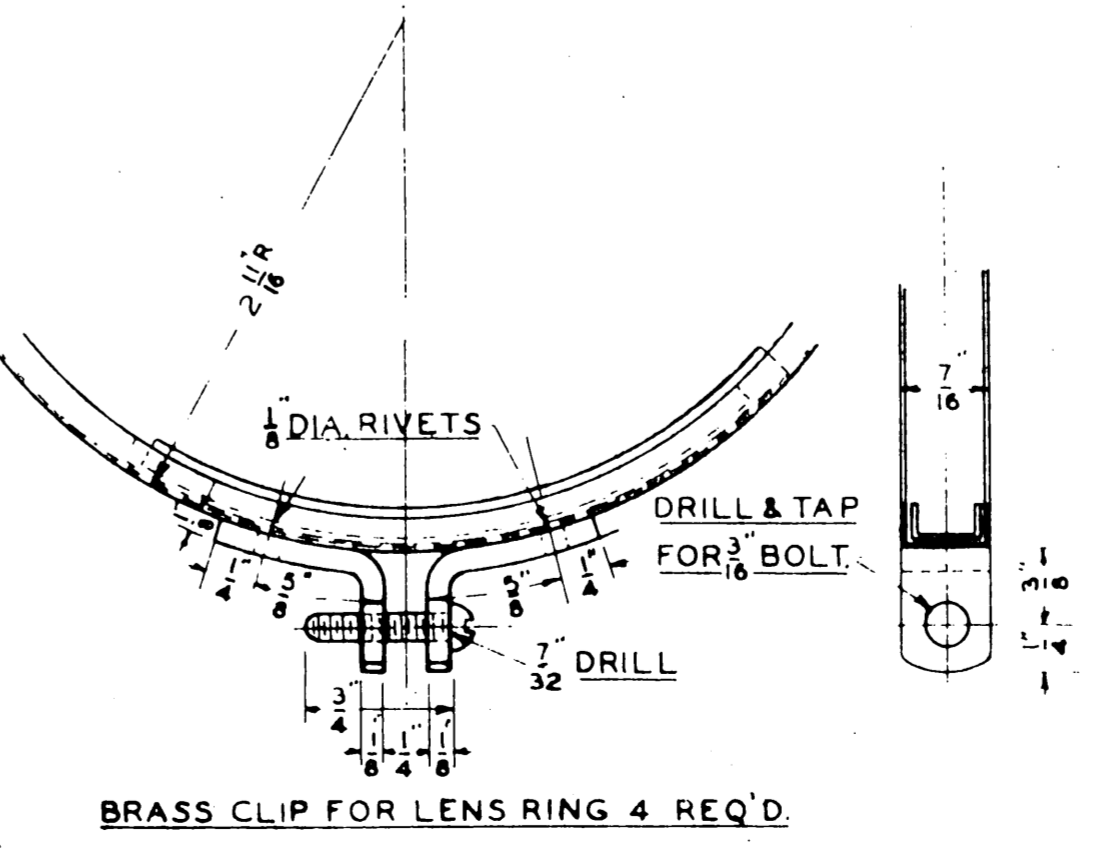
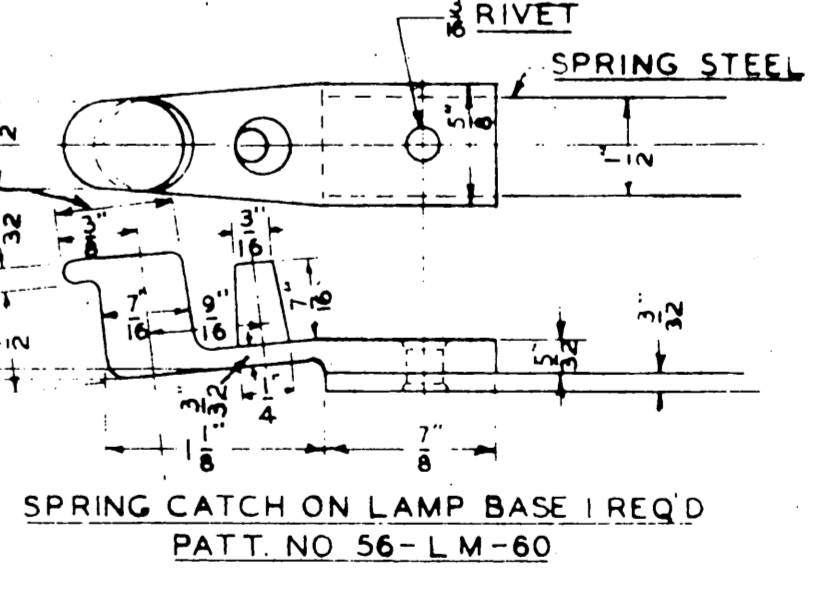
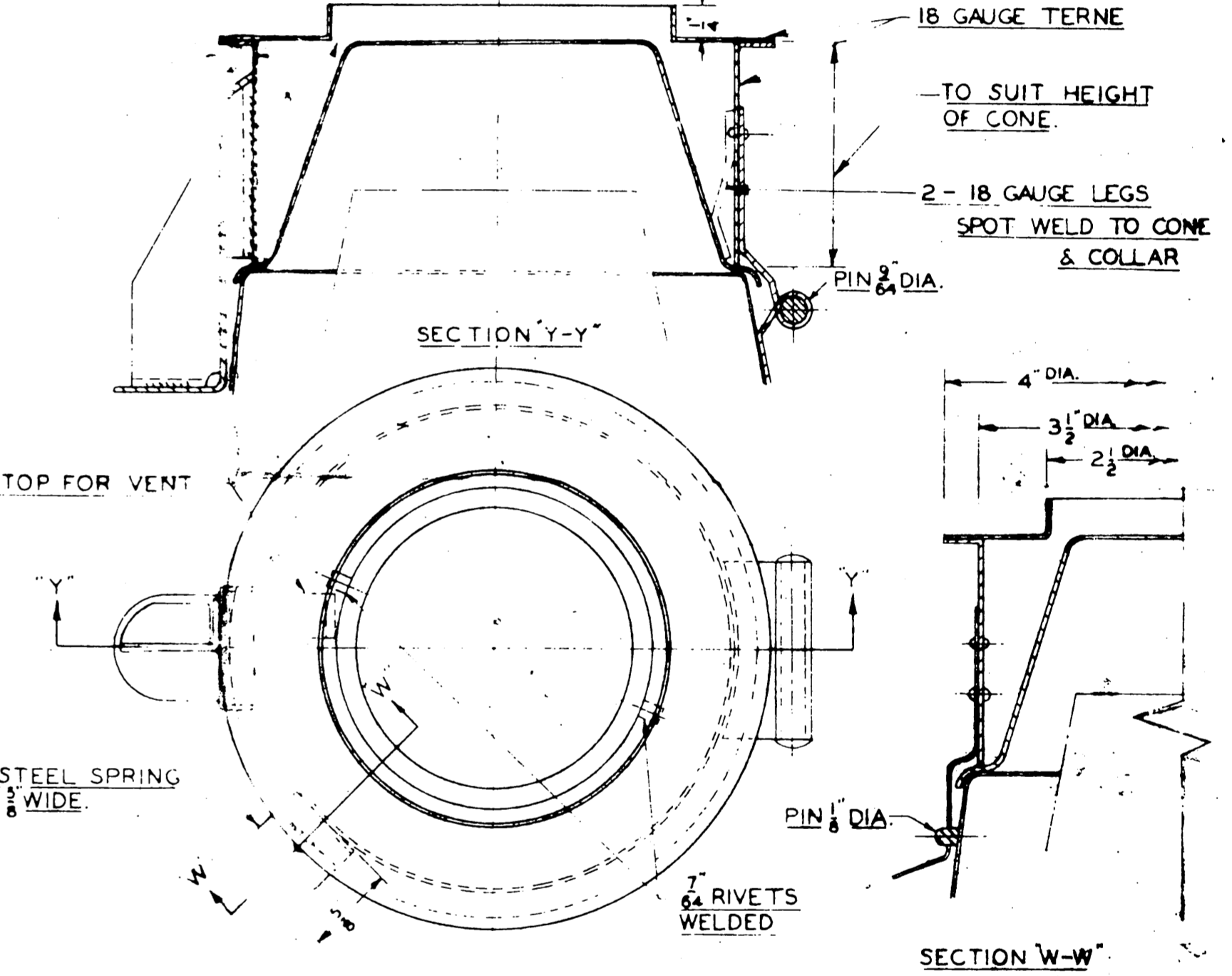
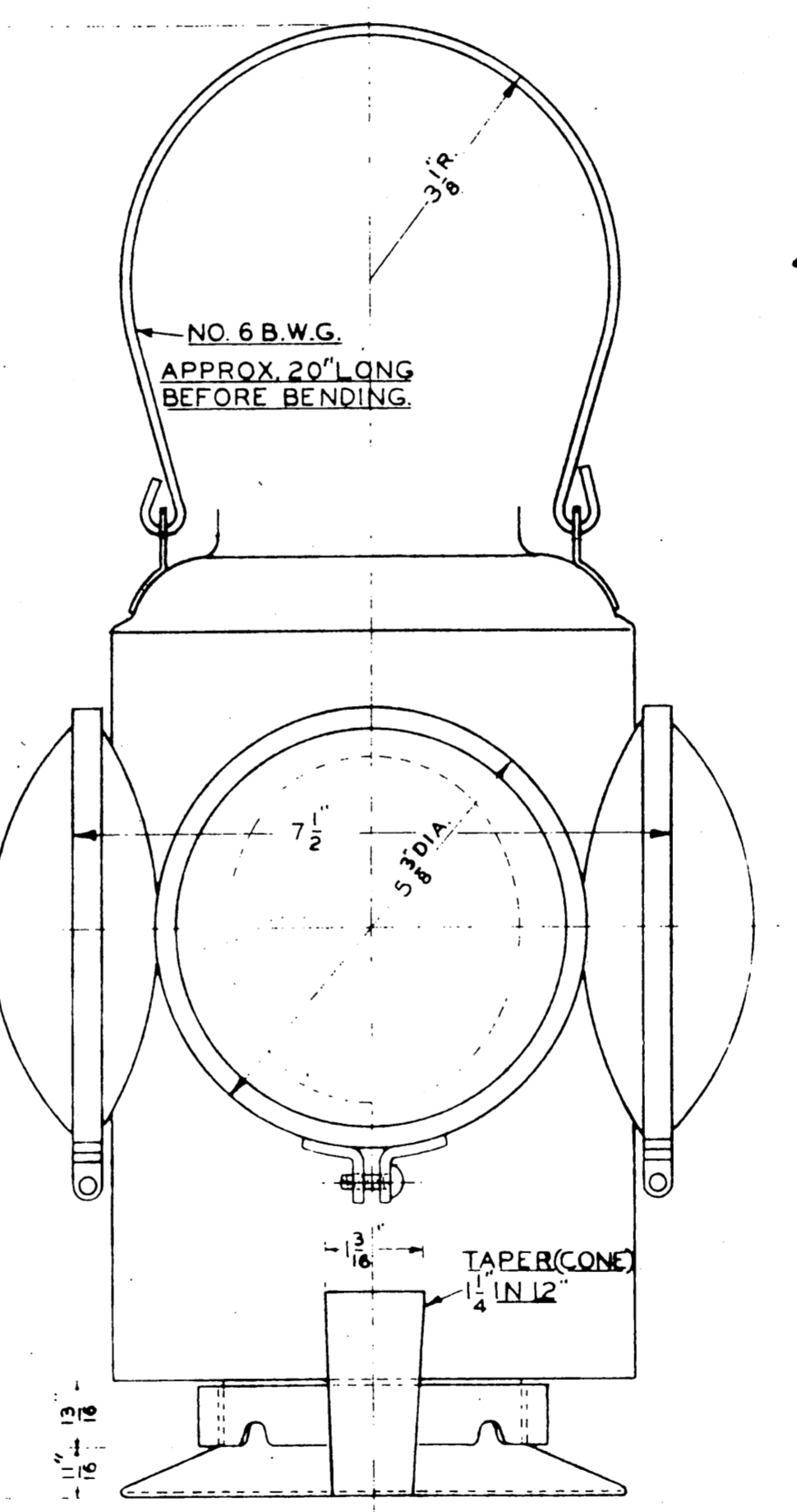
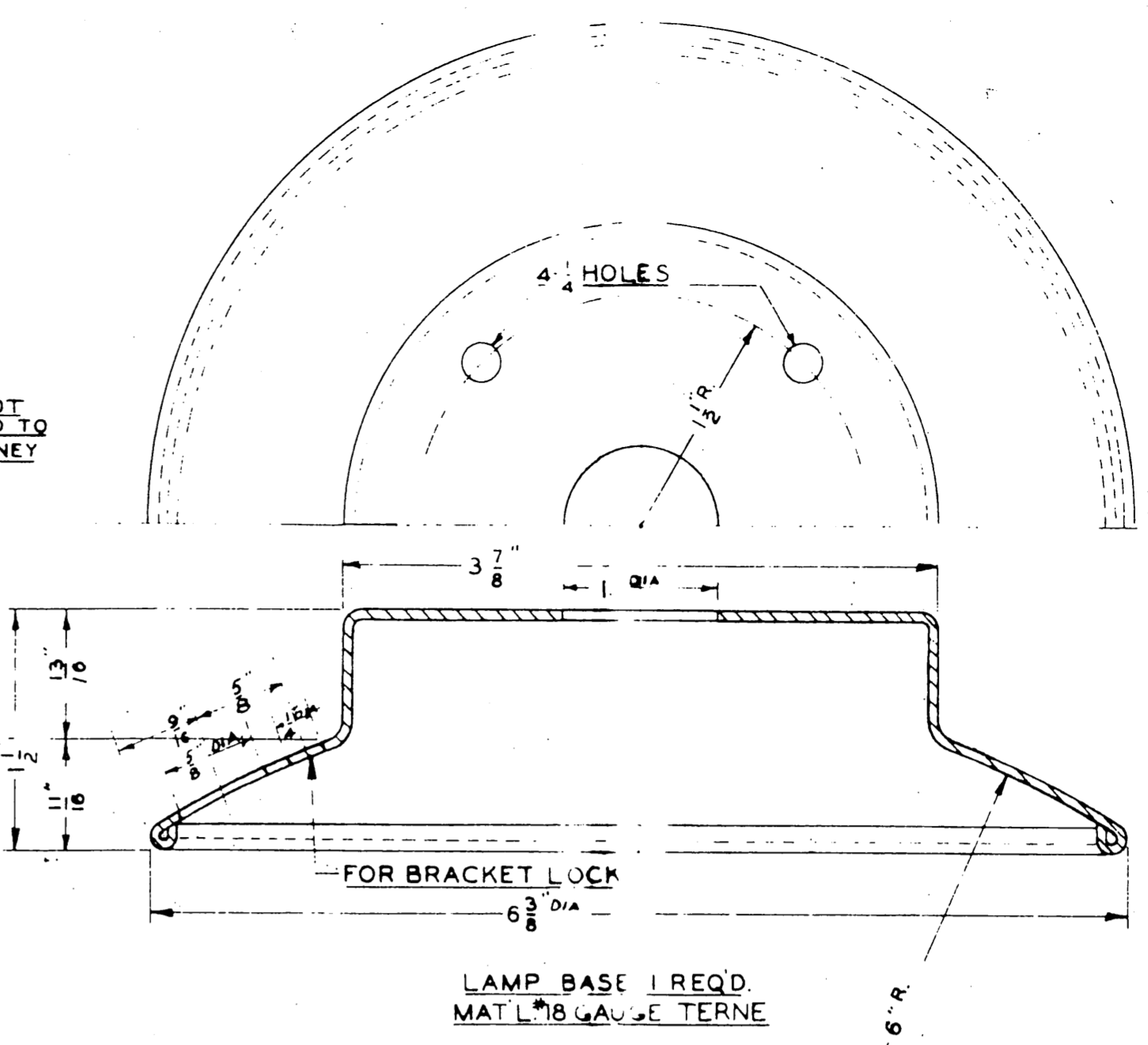
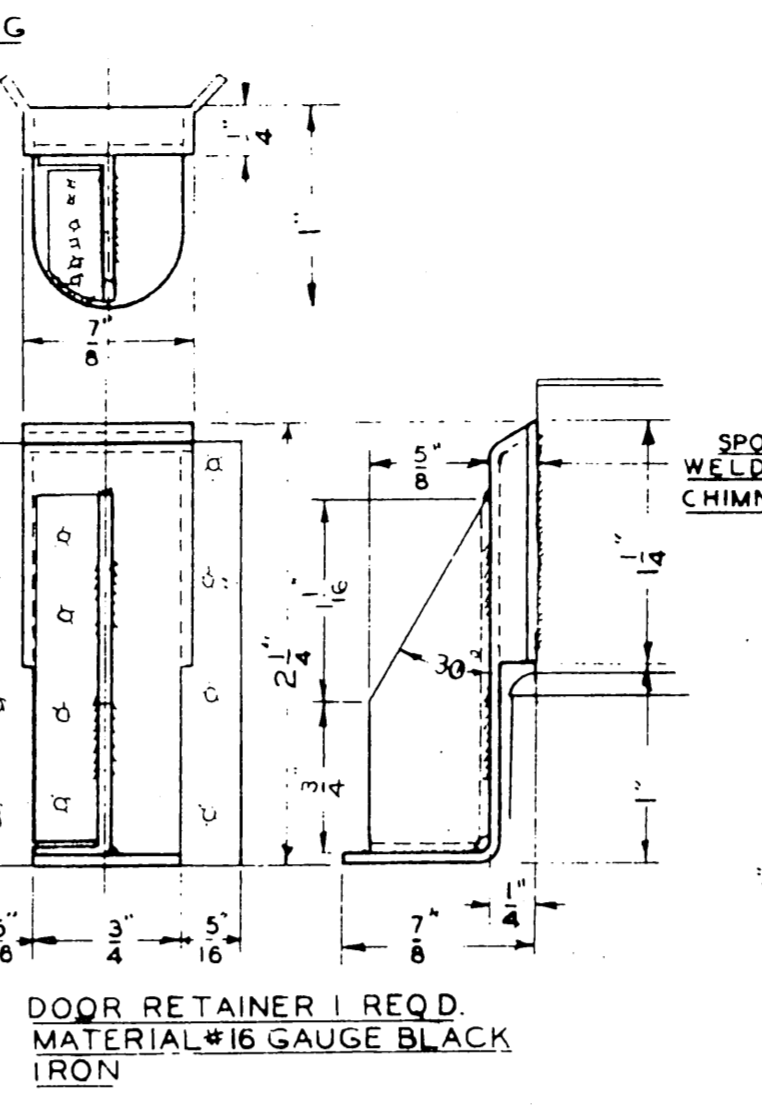
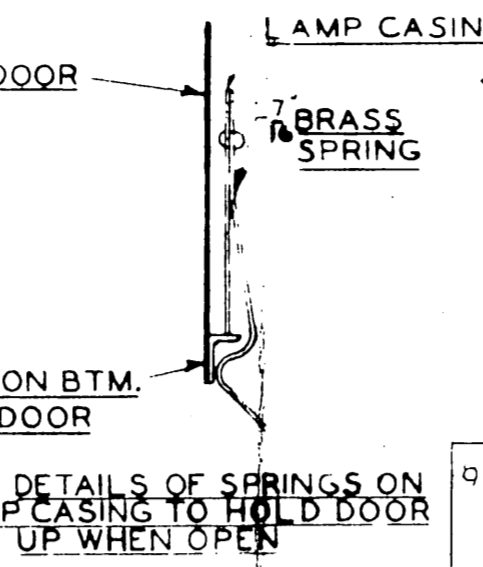
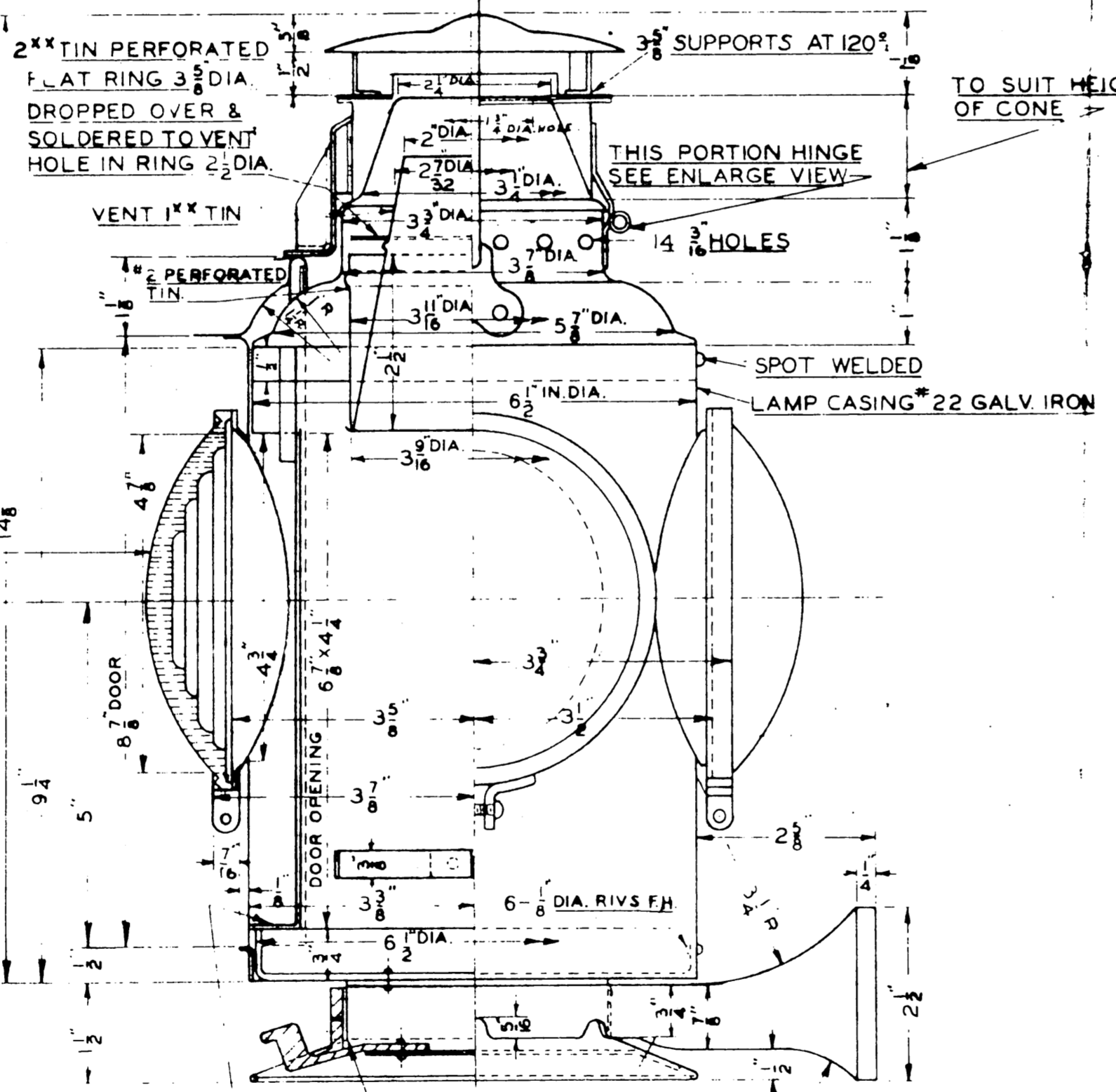
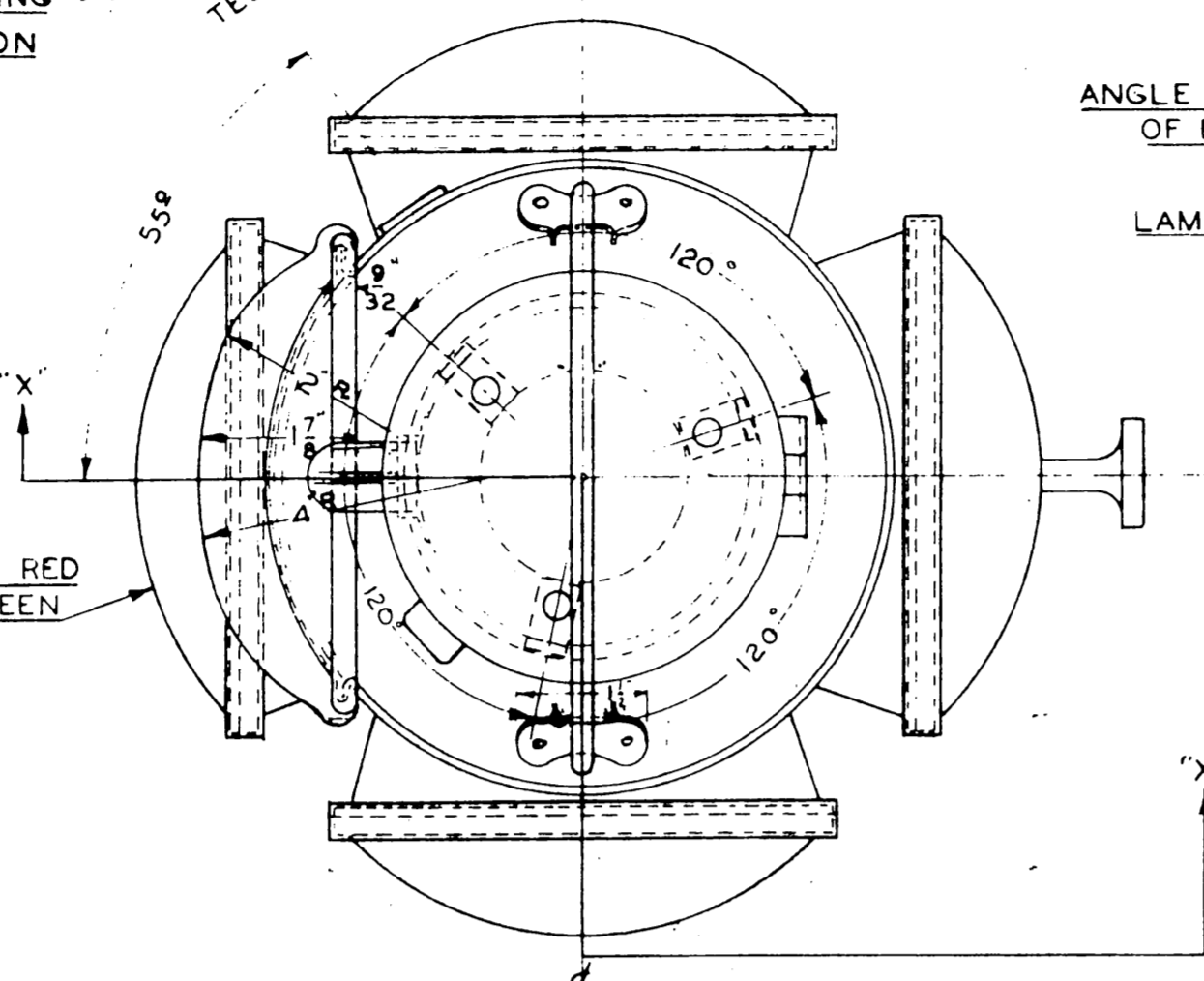
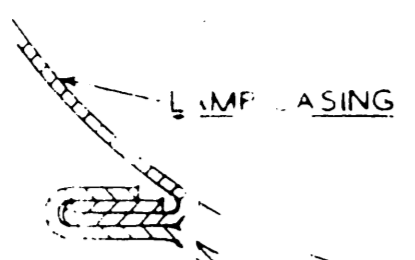
HOLE IN EXISTING LAMP TO BE TIGHTLY SEALED

STD 5/8" SWITCH LAMP LENS

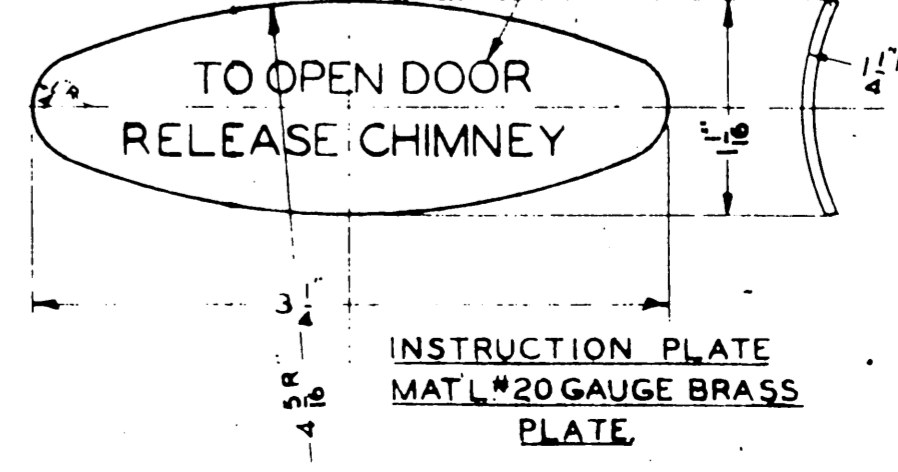
ANGLE SOLDERED TO DOOR TO CATCH ON SPRINGS WHEN DOOR IS UP

SHEET METAL LINER BETWEEN BRACKET & LAMP BASE

LAMP BRACKET 1 REQ'D PATT. NO 56-LM-61



LETTERS ON PLATE TO BE EMBOSSED



CANADIAN NATIONAL RAILWAYS
MECHANICAL DEPARTMENT
MONTREAL

SUBJECT: **MARKER LAMP**
USED: LOCOMOTIVE PASSENGER & CABOOSE

REFERENCES: CORRECT

APPROVED: *H. J. K. L.*
MECHANICAL ENGINEER (CAR) ASST. CHIEF OF CAR EQUIP'T.

4H-15223 HJKL

DRAWN BY J.C.	MAR 24 1957	REDRAWN A.H.	AUG 22 1957	LIP ADDED TO WIND DEFLECTOR	SEPT 30 1957	SECTION THROUGH WIND DEFLECTOR AND NOTS ADDED	APR 8 1958	VARIOUS CHANGES MADE
CHECKED BY J.C.								