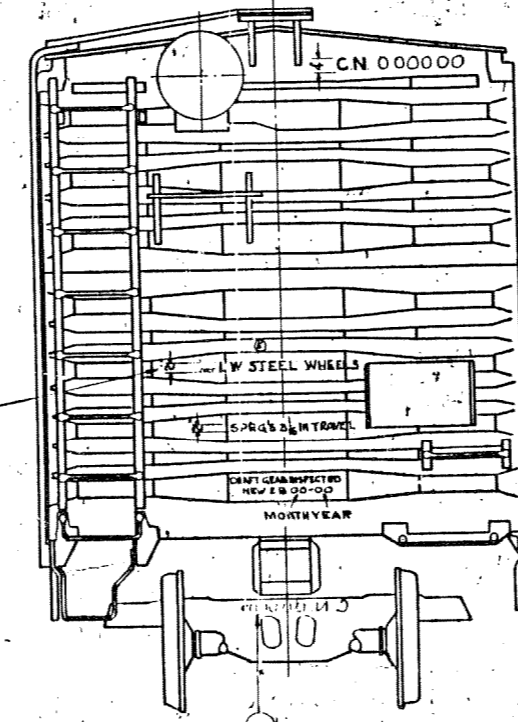
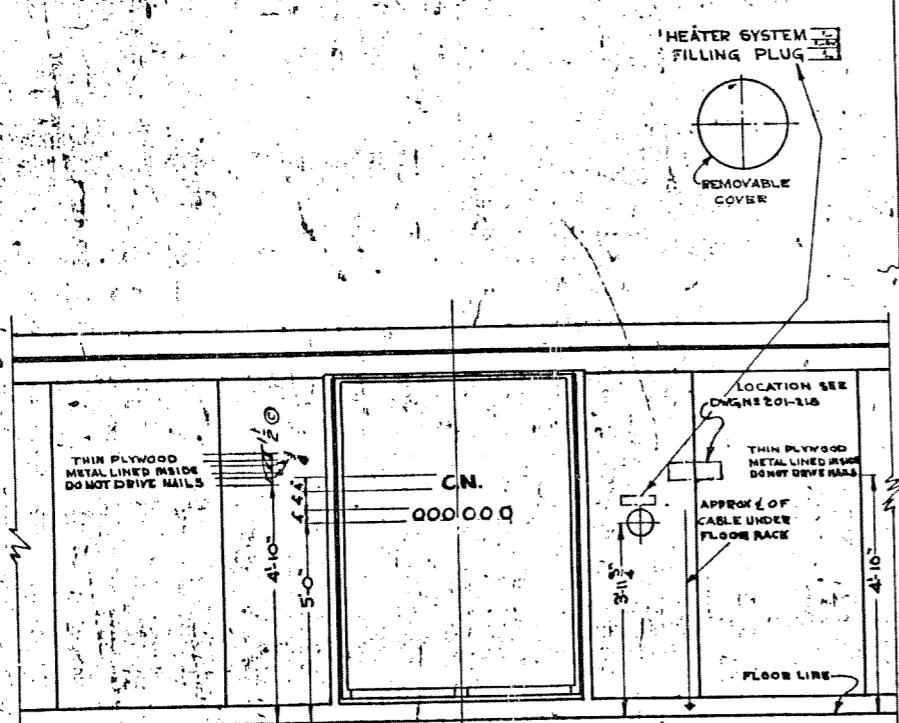


REL. A 5-17-57 220. BARS REMOVED AT CAR NUMBER AND WHEEL STENCIL CHANGED.
 REL. B 2/11/57 143. BAR AT BOTTOM OF FIRST DAY OF CAR NUMBER-TABLE A ADDED FOR SCORERS ONLY ON P4030
 REL. C 5/11/58 21. FOR P. CAR IN FUTURE. STENCIL "THIN RIMWOOD" ETC. SHALL BE CHG'D. FROM "THIN RIMWOOD" TO "THIN RIMWOOD" AT PAINT STENCIL THE "C.N. SPAC." REMOVED AND 1/4 LETTERS CHG'D TO 1/2 LETTERS.
 REL. D 1/15/58 L.B. SLACK ADJUSTER STENCIL ADDED FOR P-4890
 REL. E 6/11/58 W. STENCIL RE WHEELS. CHG'D. FROM "CAST STEEL WHEELS" TO "READ 1 W STEEL WHEELS"

SCARS ALUMINUM INSIDE FRAMING BLUES FLOOR & PANELS

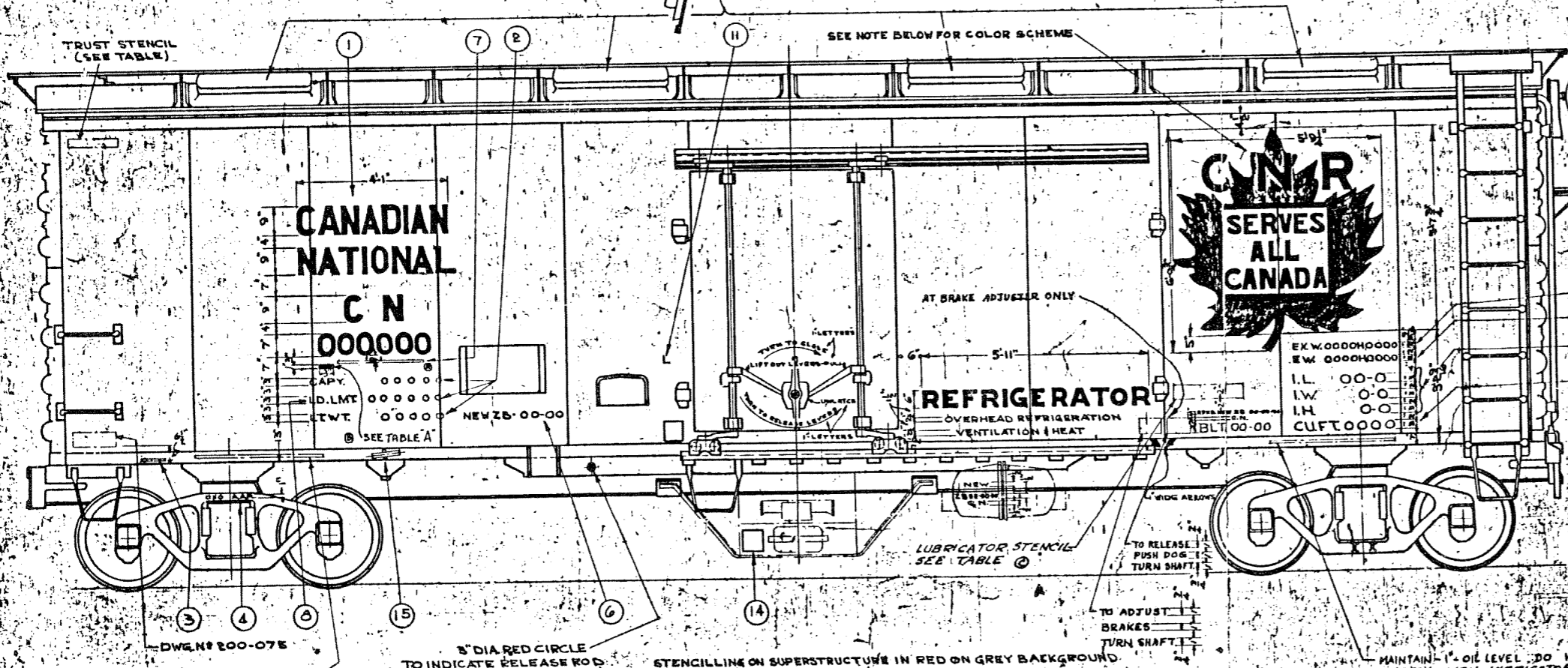
LUBRICATOR STENCIL	BAR A	TRUST STENCIL	SIZE OF JOURNALS	WHEEL STENCIL	CAR SERIES NUMBERS	EX. W.	H.	E. W.	H.	LL.	I. W.	I. H.	CU. FT.	LOT	CAP.	FRIG.	REFRIG.	C. N. R.
WITHOUT	WITH	WITH	5 1/2" 10"	CAST STEEL WHEELS	21250 TO 21299 INCL.	10'-3"	13'-3"	5'-6"	12'-9"	10'-0"	0'-6"	0'-0"	do	do	do	do	do	do
JOURNAL PAK	WITH	do	do	do	21299 TO 21399 INCL.	do	do	do	do	do	do	do	do	do	do	do	do	do
	WITH	do	do	do	21399 TO 21499 INCL.	do	do	do	do	do	do	do	do	do	do	do	do	do



AXLE LOAD LIMIT	NO.	REMARKS
SIZE OF JOURNALS	TOTAL WEIGHT ALLOWABLE ON RAILS	
4 1/2"	108000 LBS.	
5 1/2"	136000	
5 3/4"	169000	
6 1/2"	210000	

DEFECT CARD HOLDER LOCATION	LOT
PWG #40-195	P4430
#40-282	P4830

- TO BE CENTRALLY LOCATED ON 3RD PANEL FROM END AND TO BE MAINTAINED AS SHOWN EXCEPT THAT THE ENTIRE ARRANGEMENT MAY BE RAISED OR LOWERED SLIGHTLY IF NECESSARY TO SUIT THE CONSTRUCTION OF THE CAR
- NOMINAL CAPACITY: IN MULTIPLES OF FIVE THOUSAND LBS. WHICH IN NO CASE MUST NOT EXCEED STENCILLED LOAD LIMIT. FOR CUBICAL CAPACITY SEE NOTE 10. LOAD LIMIT WHICH IS THE DIFFERENCE BETWEEN TOTAL WEIGHT ALLOWABLE ON RAILS PER A.A.R. RULE NO. 66 AND SHOWN IN COLUMN E AND LIGHT WEIGHT OF THE CAR. ANF IS THE MAXIMUM LOAD PERMISSIBLE ON THE CAR, INCLUDING WEIGHT OF LADING ETC.
- LIGHT WEIGHT SHALL BE THE MULTIPLE OF ONE HUNDRED LBS. NEAREST THE SCALE WEIGHT EXCEPT WHEN THE SCALE WEIGHT INDICATES AN EVEN 50 LBS. THE LOWER MULTIPLE SHALL BE USED. (EXAMPLE: SCALE WEIGHT 19,750 LBS. TO BE STENCILLED 30,700 LBS.)
- CAR NUMBER AND INITIAL TO BE STAMPED ON OUTSIDE OF SIDE BILLS NEAR BODY BOLSTER DIAGONALLY OPPOSITE IN 2 LETTERS AND NUMBERS
- SIZE OF JOURNALS AND "A.A.R." SHOULD BE STENCILLED ON TRUCK WHERE SAME IS NOT CAST IN TEGRAL ON SIDE FRAME
- 3 LETTERS AND FIGURES ON SIDE OF TRUCK BOLSTER FACING CENTER OF CAR
- NEW, STATION SYMBOL, MONTH AND YEAR TO BE STENCILLED IN LOCATION AS SHOWN WHEN CARS ARE WEIGHED
- LOCATE AS SHOWN IN LETTERS THE FOLLOWING STENCIL ON NEW OR REPAINTED CARS
 NEW ZS 00-00
 STATION SYMBOL, MONTH, YEAR, PAINT, MANUFACTURER'S SYMBOL
- A STAR MUST BE MAINTAINED CLOSE TO LEFT END OF LOAD LIMIT MARKING ON ALL CARS THAT ARE NOT CAPABLE OF CARRYING THE MAXIMUM LOAD LIMIT PERMITTED BY INTERCHANGE RULE NO. 66 (A.A.R.) THE STAR INDICATES THAT LIMIT SO MARKED MUST NOT BE CHANGED EXCEPT BY OWNER
- USE OF FRACTIONAL DIMENSIONS OF INCHES: DIMENSIONS OF 3/4 INCH WIDTH AND HEIGHT OMIT FRACTIONS AND USE NEXT HIGHER EVEN INCH (EXAMPLE: ACTUAL 9 1/2 INCH MARK 9 1/2) DIMENSIONS OF INSIDE LENGTH, WIDTH AND HEIGHT OMIT FRACTIONS AND USE NEXT LOWER EVEN INCH (EXAMPLE: 10'-0 1/2" MARK 10'-0")
- CUBICAL CAPACITY: USE ACTUAL INSIDE DIMENSIONS OF CAR IN COMPUTING CUBICAL CONTENTS (DRAWING SIZES TO WHICH CAR IS BUILT)
- FACING THE END OF CAR THE LEFT HAND SIDE OF CAR TO BE LETTERED IN THE OPPOSITE SIDE TO BE LETTERED IN 2 LETTERS TO BE APPLIED NEAR FRONT EDGE OF DOOR
- DIMENSION MARKINGS: THE DIMENSIONS INDICATING EAVES WIDTH AND HEIGHT (E.W.H.) SHALL BE AS FOLLOWS: EAVES WIDTH IS THE OUTSIDE WIDTH OF CAR AT TOP OF EAVES (UPPER EAVES IF Z BAR SIDE PLATE) EXCEPT ON CARS HAVING A LATITUDINAL RUNNING BOARD EXTENSION MEASURE FROM THE OUTSIDE EDGE OF TOP OF RUNNING BOARD TO CORRESPONDING POINT ON OPPOSITE SIDE OF CAR. EAVES HEIGHT IS THE HEIGHT FROM TOP OF RAIL TO EAVES (UPPER EAVES IF Z BAR SIDE PLATE) EXCEPT ON CARS HAVING LATITUDINAL RUNNING BOARD EXTENSION. MEASURE TO TOP OF RUNNING BOARD EXTENSION AT SIDE OF CAR. FOR ALL BOX OR OTHER HOUSE CARS STANDING MORE THAN 12 FEET FROM TOP OF RAIL TO EAVES (UPPER EAVES IF Z BAR SIDE PLATE) AN ADDITIONAL SET OF DIMENSIONS SHALL BE STENCILLED ON THE CAR INDICATING EXTREME WIDTH & HEIGHT (EX. W. & H.) EXTREME WIDTH IS THE MEASUREMENT OVER THE ATTACHMENT PROJECTING TO THE GREATEST EXTENT AROUND EAVES (TOP OF SIDE LADDER, TOP OF DOOR FIXTURE ETC.) EXTREME HEIGHT AT EXTREME WIDTH IS THE DISTANCE FROM TOP OF RAIL TO POINT AT WHICH EXTREME WIDTH EXISTS
- TOP LINE OMITTED WHEN EAVES HEIGHT IS 12 FEET OR LESS
- CHARCOAL HEATER TO BE STENCILLED "HEATER MONTH YEAR CHECKED NEW ZS 00-00 C.N."
- DEFECT CARD HOLDER LOCATED ACCORDING TO N.S.C. DWG. NO. 200-075 STENCILLED DEFECT CARDS IN RED LETTERS



DWG. NO. 200-075
 3" DIA. RED CIRCLE TO INDICATE RELEASE ROD (FILL IN WITH RED PAINT) BOTH SIDES

STENCILLING ON SUPERSTRUCTURE IN RED ON GREY BACKGROUND UNDERNEATH IN WHITE ON BLACK INSIDE OF CAR BLACK

MAINTAIN OIL LEVEL - DO NOT USE PACKING IRON APPLY WHEN LUBRICATORS ARE USED (SEE TABLE)

COLOR SCHEME OF CREST
 C.N. COLOR STANDARDS GREEN IS RED 10
 MAPLE LEAF IS GREEN ON GREY BACKGROUND
 LETTERING IS RED ON GREY BACKGROUND
 RED BORDER AROUND SERVES ALL CANADA
 GREY BORDER AROUND SERVES ALL CANADA
 STRIPES IN MAPLE LEAF ARE RED
 THE LETTERS C.N.R.
 C IS RED ON GREY BACKGROUND
 N IS RED WITH GREY BORDER ON GREEN BACKGROUND
 R IS RED ON GREY BACKGROUND

STENCIL DIAGRAM

NATIONAL STEEL CAR CORPORATION
 HAMILTON CANADA

CONTRACT NO. 32-392
 DRAWING NO. 32-392
 DATE FEB. 1957